

EFD 10 1p



Specifications

ETI Code	002540001
Description	EFD 10 1p
Class name	Fuse switch
Rated current (A)	32
Size	10x38
Number of poles	1
Rated AC voltage (V)	690
Application class	AC 22B
Connection	1-25 mm ²
Mounting	35mm DIN rail

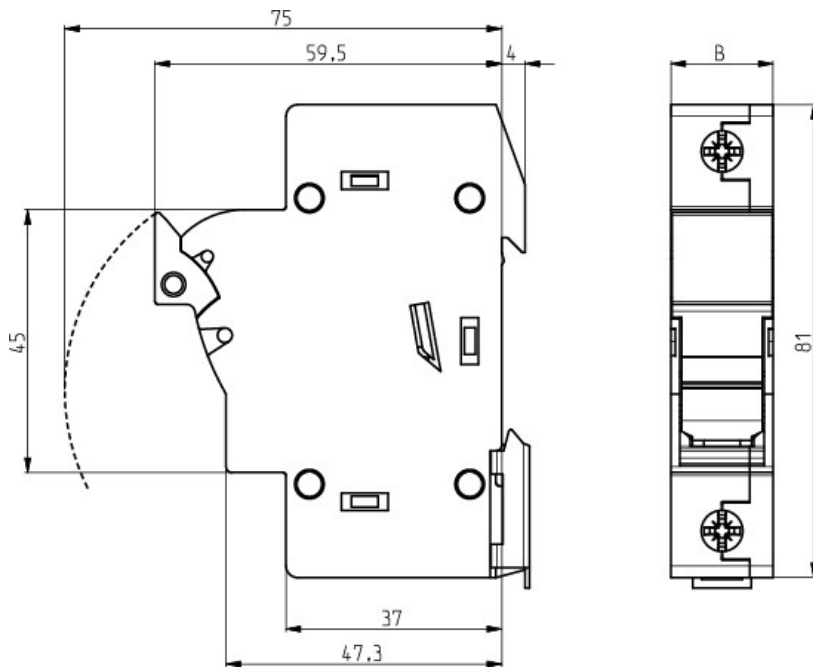
Online product page [🔗](#)

Additional documentation



- Technical data catalog
- Certificate
- 3D model
- Instr
- uctions CE
- Declaration
- Eplan file

Dimensional drawing



	B
EFD 8, 10 1p	17,5
EFD 8, 10 1p+N	35
EFD 8, 10 2p	35
EFD 8, 10 3p	52,5
EFD 8, 10 3p+N	70