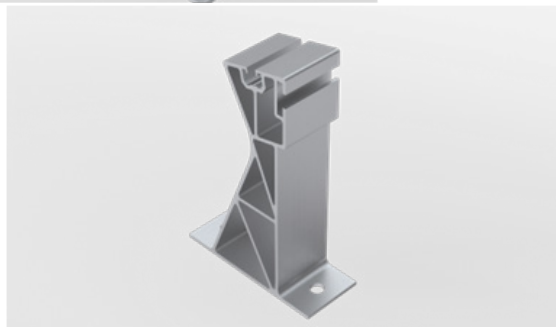
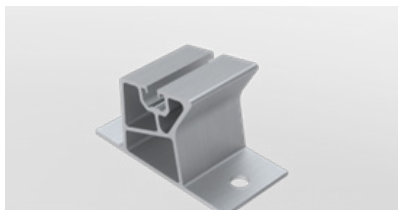


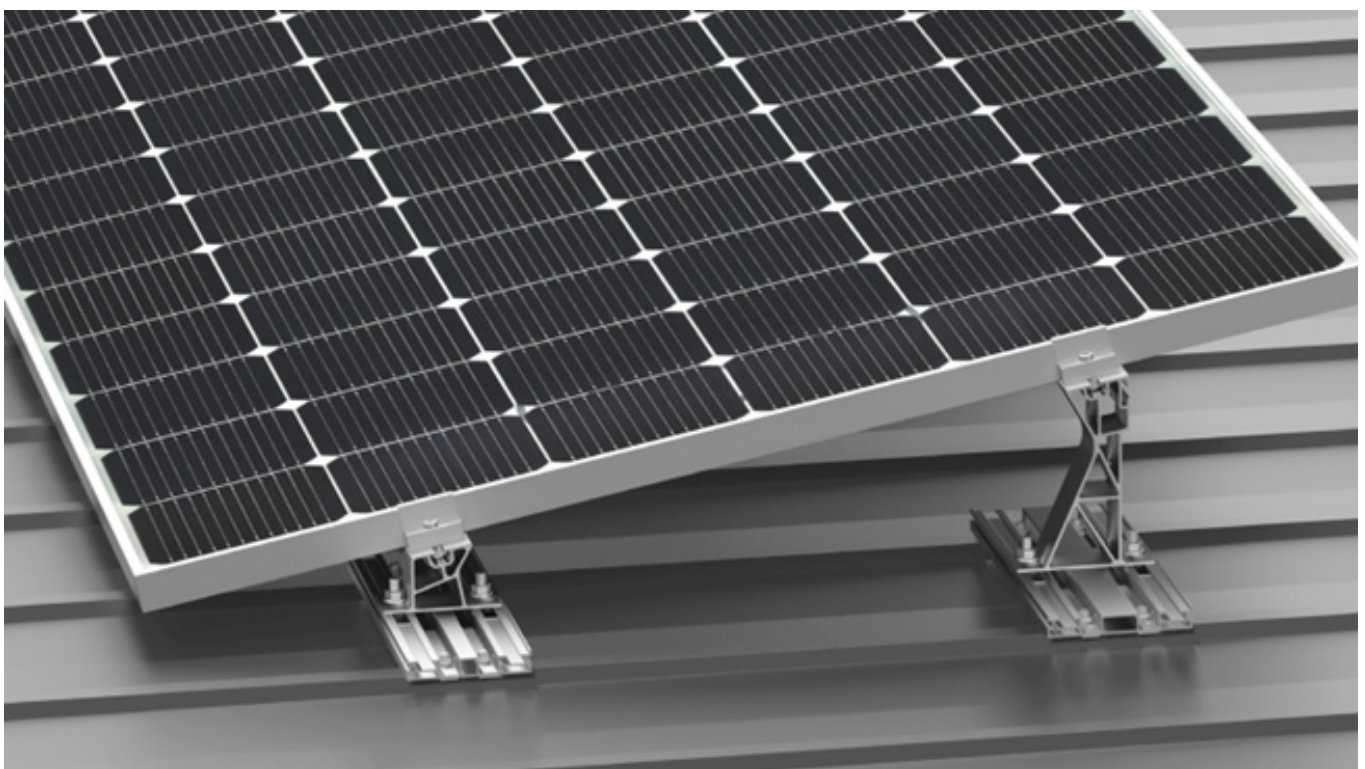
CHARACTERISTIC

Keno sp.z o.o. is pleased to present you a solution for use on flat roofs covered with a sandwich panel with the use of a structure with rails and K-45 aluminum handles.



- EASY AND QUICK INSTALLATION
- MOUNTING OF MODULES ON THE SHORT SIDE
- ADJUSTMENT ALONG THE RAIL
- POSSIBILITY OF INSTALLATION IN THE SOUTH AND EAST-WEST

[SEE
CATALOG](#)



SANDWICH PANEL CONSTRUCTION WITH CROSS RAILS

DESCRIPTION OF A SANDWICH PANEL CONSTRUCTION WITH CROSS RAILS

Keno sp.z o.o. provides a 10-year warranty on the above structure. The structure is assembled by attaching the K-66-1 and K-66-2 aluminum rail to the sheet surface at four points with the K-20 sheet metal screw. The photovoltaic modules are based on the K-45-7 and K-45-8 aluminum holders, thanks to which the structure obtains an inclination angle of 11° .

The design allows modules to be installed on a short side.

TECHNICAL DRAWING

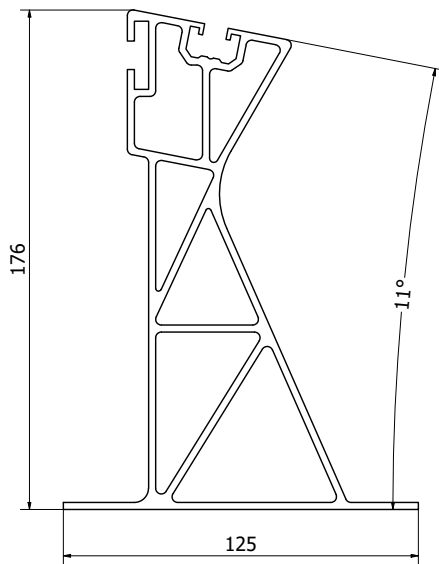


Fig. 1 K-45-7 aluminum mounting bracket, high

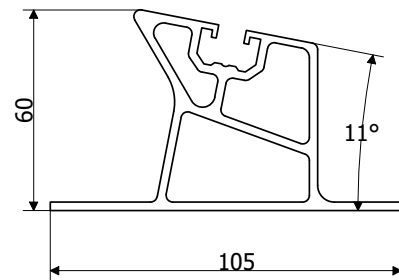


Fig. 2 K-45-8 low aluminum mounting bracket

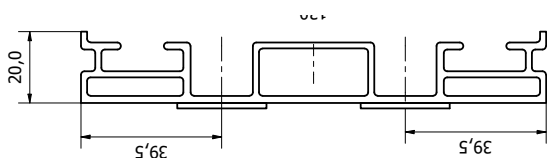


Fig. 3 K-66-1 aluminum rail

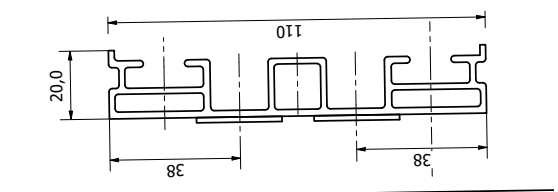


Fig. 4 K-66-2 aluminum rail